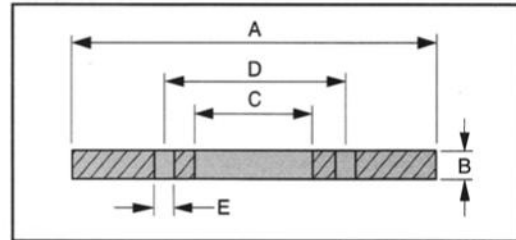
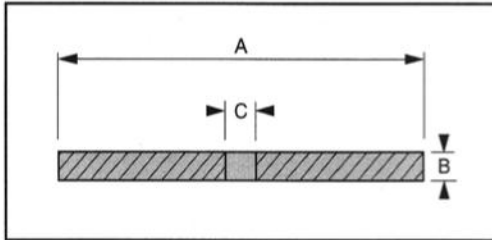




# Polyurethane Scraper Discs

Replacement Parts for Steel Mandrel Pipeline Pigs  
by Girard Industries & other manufacturers



- Made of liquid cast polyurethane.
- Outstanding cut and abrasion resistance.
- Center hole and bolt circle can be modified to fit ALL pig bodies.
- High tear strength.
- Disc OD can be sized to fit any pipeline ID.
- Custom disc thickness available.

Size	A	B	C	D	E		Approx. Weight
	O.D.	Thickness	Ctr. Hole	Bolt Circle	Bolt #	Size	
2"	2 1/4"	1/4"	7/16"	n/a	n/a	n/a	0.05 lbs
3"	3 1/4"	1/4"	9/16"	n/a	n/a	n/a	0.10 lbs
4"	4 1/4"	3/8"	9/16"	n/a	n/a	n/a	0.25 lbs
6"	6 3/8"	5/8"	1 1/16"	n/a	n/a	n/a	0.90 lbs
6" TW	6 5/8"	5/8"	1 1/16"	n/a	n/a	n/a	1.00 lbs
8"	8 1/4"	11/16"	1 1/16"	n/a	n/a	n/a	1.70 lbs
8" TW	8 5/8"	11/16"	1 1/16"	n/a	n/a	n/a	1.80 lbs
10"	10 5/16"	3/4"	1 1/16"	n/a	n/a	n/a	2.80 lbs
10" TW	10 5/8"	3/4"	1 1/16"	n/a	n/a	n/a	3.00 lbs
12"	12 3/8"	7/8"	1 1/16"	n/a	n/a	n/a	4.70 lbs
12" TW	12 5/8"	7/8"	1 1/16"	n/a	n/a	n/a	4.90 lbs
14"	13 5/8"	1"	1 1/16"	n/a	n/a	n/a	6.50 lbs
14" TW	14"	1"	1 1/16"	n/a	n/a	n/a	6.70 lbs



Size	A	B	C	D	E		Approx. Weight
	O.D.	Thickness	Ctr. Hole	Bolt Circle	Bolt #	Size	
14" BC	14"	1"	4 3/4"	6 1/2"	6	9/16"	6.50 lbs
16"	15 3/4"	1 1/16"	8 1/2"	11"	8	9/16"	7.00 lbs
16" CC	15 3/4"	1 1/16"	6 3/4"	8 1/2"	8	9/16"	7.80 lbs
18"	17 3/4"	1 1/8"	10 3/4"	12 3/4"	8	9/16"	7.90 lbs
18" CC	17 3/4"	1 1/8"	8 1/2"	10 1/2"	12	9/16"	9.50 lbs
18/16"	17 3/4"	1 1/8"	8 1/2"	11"	8	9/16"	9.50 lbs
20"	19 3/4"	1 3/8"	11"	13 1/2"	12	9/16"	13.00 lbs.
20" CC	19 3/4"	1 3/8"	8 1/2"	10 1/2"	12	9/16"	15.30 lbs
22"	21 3/4"	1 3/8"	11"	13 1/2"	12	9/16"	16.80 lbs
22" CC	21 3/4"	1 3/8"	10 1/2"	13"	14	9/16"	17.25 lbs
24"	23 3/4"	1 1/2"	14 1/4"	16 1/2"	14	9/16"	19.00 lbs
24" CC	23 3/4"	1 1/2"	10 1/2"	13"	14	9/16"	23.50 lbs
26"	25 3/4"	1 1/2"	14 1/4"	16 1/2"	14	9/16"	24.25 lbs
26" CC	25 3/4"	1 1/2"	12 1/2"	15"	16	9/16"	27.00 lbs
28"	27 3/4"	1 1/2"	16 1/2"	19 1/2"	16	9/16"	26.75 lbs
28" CC	27 3/4"	1 1/2"	12 1/2"	15"	16	9/16"	32.00 lbs
30"	29 3/4"	1 3/4"	16 1/2"	19 1/2"	16	9/16"	37.25 lbs
30" CC	29 3/4"	1 3/4"	15 1/2"	18"	18	9/16"	39.00 lbs
32"	31 3/4"	1 3/4"	16 1/2"	19 1/2"	16	9/16"	40.50 lbs
32" CC	31 3/4"	1 3/4"	15 1/2"	18"	18	9/16"	46.50 lbs
34"	33 3/4"	1 7/8"	22 1/4"	25"	22	9/16"	43.00 lbs
34" CC	33 3/4"	1 7/8"	17 1/2"	20"	22	9/16"	54.00 lbs
36"	35 3/4"	2"	22 1/4"	25"	22	9/16"	55.00 lbs
36" CC	35 3/4"	2"	17 1/2"	20"	22	9/16"	67.00 lbs
40"	39 3/4"	2"	22 1/2"	26"	24	5/8"	74.00 lbs
40" CC	39 3/4"	2"	21"	24"	24	5/8"	79.00 lbs
42"	41 3/4"	2"	25"	30"	24	5/8"	77.00 lbs
42" CC	41 3/4"	2"	21"	24"	24	5/8"	90.00 lbs
48"	47 3/4"	2"	32"	36"	24	5/8"	87.00 lbs
48" CC	47 3/4"	2"	25"	28"	28	5/8"	114.50 lbs

Note: Sizes listed are subject to a tolerance of +/- 1/8"