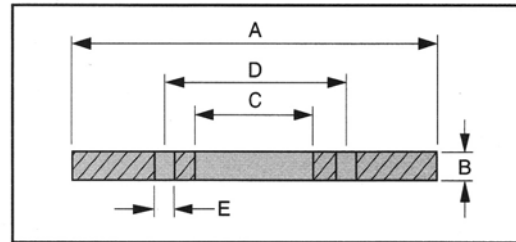
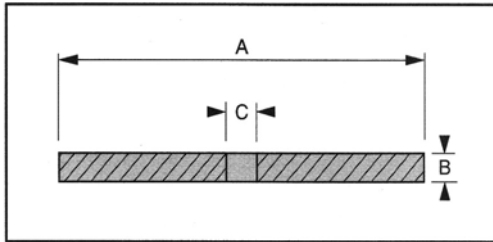


# Polyurethane Scraper Discs

Replacement Parts for Steel Mandrel Pipeline Pigs  
 by Girard Industries & other manufacturers



- Made of liquid cast polyurethane.
- Outstanding cut and abrasion resistance.
- Center hole and bolt circle can be modified to fit ALL pig bodies.
- High tear strength.
- Disc OD can be sized to fit any pipeline ID.
- Custom disc thickness available.

| Size   | A        | B         | C         | D           | E            | Approx. Weight |
|--------|----------|-----------|-----------|-------------|--------------|----------------|
|        | O.D.     | Thickness | Ctr. Hole | Bolt Circle | Bolt# - Size |                |
| 2"     | 2 1/4"   | 1/4"      | 7/16"     | n/a         | n/a          | 0.05 lbs       |
| 3"     | 3 1/4"   | 1/4"      | 9/16"     | n/a         | n/a          | 0.10 lbs       |
| 4"     | 4 1/4"   | 3/8"      | 9/16"     | n/a         | n/a          | 0.25 lbs       |
| 6"     | 6 3/8"   | 5/8"      | 1 1/16"   | n/a         | n/a          | 0.90 lbs       |
| 6" TW  | 6 5/8"   | 5/8"      | 1 1/16"   | n/a         | n/a          | 1.00 lbs       |
| 8"     | 8 1/4"   | 11/16"    | 1 1/16"   | n/a         | n/a          | 1.70 lbs       |
| 8" TW  | 8 5/8"   | 11/16"    | 11/16"    | n/a         | n/a          | 1.80 lbs       |
| 10"    | 10 5/16" | 3/4"      | 1 1/16"   | n/a         | n/a          | 2.80 lbs       |
| 10" TW | 10 5/8"  | 3/4"      | 1 1/16"   | n/a         | n/a          | 3.00 lbs       |
| 12"    | 12 3/8"  | 7/8"      | 1 1/16"   | n/a         | n/a          | 4.70 lbs       |
| 12" TW | 12 5/8"  | 7/8"      | 1 1/16"   | n/a         | n/a          | 4.90 lbs       |
| 14"    | 13 5/8"  | 1"        | 1 1/16"   | n/a         | n/a          | 6.50 lbs       |
| 14" TW | 14"      | 1"        | 1 1/16"   | n/a         | n/a          | 6.70 lbs       |
| 16"    | 15 3/4"  | 1 1/16"   | 8 1/2"    | 11"         | 8 - 9/16"    | 7.00 lbs       |
| 16" CC | 15 3/4"  | 1 1/16"   | 6 3/4"    | 8 1/2"      | 8 - 9/16"    | 7.80 lbs       |
| 18"    | 17 3/4"  | 1 1/8"    | 10 3/4"   | 12 3/4"     | 8 - 9/16"    | 7.90 lbs       |
| 18" CC | 17 3/4"  | 1 1/8"    | 8 1/2"    | 10 1/2"     | 12 - 9/16"   | 9.50 lbs       |
| 18/16" | 17 3/4"  | 1 1/8"    | 8 1/2"    | 11"         | 8 - 9/16"    | 9.50 lbs       |



6531 North Eldridge Parkway | Houston, Texas 77041, USA  
 800.231.2861 | PHONE: 713.466.3100 | FAX: 713.466.8050  
 sales@girardindustries.com | www.GirardIndustries.com

|     |         |        |     |         |            |           |
|-----|---------|--------|-----|---------|------------|-----------|
| 20" | 19 3/4" | 1 3/8" | 11" | 13 1/2" | 12 - 9/16" | 13.00 lbs |
|-----|---------|--------|-----|---------|------------|-----------|

|        |         |        |         |         |            |            |
|--------|---------|--------|---------|---------|------------|------------|
| 20" CC | 19 3/4" | 1 3/8" | 8 1/2"  | 10 1/2" | 12 - 9/16" | 15.30 lbs  |
| 22"    | 21 3/4" | 1 3/8" | 11"     | 13 1/2" | 12 - 9/16" | 16.80 lbs  |
| 22" CC | 21 3/4" | 1 3/8" | 10 1/2" | 13"     | 14 - 9/16" | 17.25 lbs  |
| 24"    | 23 3/4" | 1 1/2" | 14 1/4" | 16 1/2" | 14 - 9/16" | 19.00 lbs  |
| 24" CC | 23 3/4" | 1 1/2" | 10 1/2" | 13"     | 14 - 9/16" | 23.50 lbs  |
| 26"    | 25 3/4" | 1 1/2" | 14 1/4" | 16 1/2" | 14 - 9/16" | 24.25 lbs  |
| 26" CC | 25 3/4" | 1 1/2" | 12 1/2" | 15"     | 16 - 9/16" | 27.00 lbs  |
| 28"    | 27 3/4" | 1 1/2" | 16 1/2" | 19 1/2" | 16 - 9/16" | 26.75 lbs  |
| 28" CC | 27 3/4" | 1 1/2" | 12 1/2" | 15"     | 16 - 9/16" | 32.00 lbs  |
| 30"    | 29 3/4" | 1 3/4" | 16 1/2" | 19 1/2" | 16 - 9/16" | 37.25 lbs  |
| 30" CC | 29 3/4" | 1 3/4" | 15 1/2" | 18"     | 18 - 9/16" | 39.00 lbs  |
| 32"    | 31 3/4" | 1 3/4" | 16 1/2" | 19 1/2" | 16 - 9/16" | 40.50 lbs  |
| 32" CC | 31 3/4" | 1 3/4" | 15 1/2" | 18"     | 18 - 9/16" | 46.50 lbs  |
| 34"    | 33 3/4" | 1 7/8" | 22 1/4" | 25"     | 22 - 9/16" | 43.00 lbs  |
| 34" CC | 33 3/4" | 1 7/8" | 17 1/2" | 20"     | 22 - 9/16" | 54.00 lbs  |
| 36"    | 35 3/4" | 2"     | 22 1/4" | 25"     | 22 - 9/16" | 55.00 lbs  |
| 36" CC | 35 3/4" | 2"     | 17 1/2" | 20"     | 22 - 9/16" | 67.00 lbs  |
| 40"    | 39 3/4" | 2"     | 22 1/2" | 26"     | 24 - 5/8"  | 74.00 lbs  |
| 40" CC | 39 3/4" | 2"     | 21"     | 24"     | 24 - 5/8"  | 79.00 lbs  |
| 42"    | 41 3/4" | 2"     | 25"     | 30"     | 24 - 5/8"  | 77.00 lbs  |
| 42" CC | 41 3/4" | 2"     | 21"     | 24"     | 24 - 5/8"  | 90.00 lbs  |
| 48"    | 47 3/4" | 2"     | 32"     | 36"     | 24 - 5/8"  | 87.00 lbs  |
| 48" CC | 47 3/4" | 2"     | 25"     | 28"     | 28 - 5/8"  | 114.50 lbs |